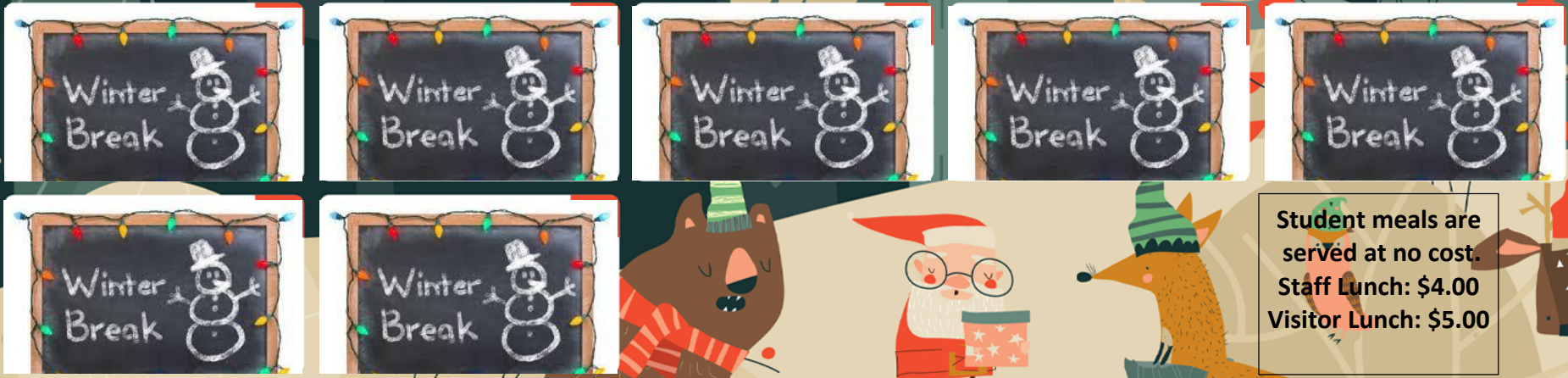




Monday	Tuesday	Wednesday	Thursday	Friday
Chicken Smackers (10 pcs.)² Breadstick (1) Cheesy Broccoli Sweet Potatoes Chilled Fruit Variety 100% Fruit Juice	Chili³ Fritos (1 oz.) Crackers (2 pkg.) Corn California Mixed Veggies Chilled Fruit Variety Frozen Fruit Sidekick	Corn Dog⁴ Glazed Carrots Baked Beans Chilled Fruit Variety 100% Fruit Juice	Cheese or Pepperoni Pizza⁵ Garden Side Salad Celery Sticks (1/2 cup) w/ Ranch Sunset Sip Fresh Fruit Variety Frozen Fruit Sidekick	Cheeseburger⁶ Lettuce, Tomatoes, Pickles Seasoned Fries Green Beans Fresh Fruit Variety 100% Fruit Juice
Chicken Tenders (2)⁹ Mac & Cheese Glazed Carrots Broccoli Chilled Pineapple 100% Fruit Juice	Mexican Fiestada¹⁰ Chips w/ Salsa (1/4 Cup) Buttery Corn Perfect Pinto Beans Chilled Applesauce Frozen Fruit Sidekick	Country Steak & Gravy¹¹ w/ Roll Mashed Potatoes Green Beans Chilled Peaches 100% Fruit Juice	Cheese or Pepperoni Pizza¹² Garden Side Salad Carroteenies w/ Ranch Fresh Fruit Variety Frozen Fruit Sidekick	Chicken Sandwich¹³ Lettuce, Tomatoes, Pickles Seasoned Fries Green Beans Fresh Fruit Variety 100% Fruit Juice
Chicken & Waffles (2)¹⁶ Green Beans Sweet Potatoes Chilled Fruit Variety 100% Fruit Juice	Spaghetti¹⁷ WG Roll Black-eyed Peas Turnip Greens Chilled Fruit Variety Frozen Fruit Sidekick	Pork Rib Patty On Bun¹⁸ Baked Beans Seasoned Fries Fresh Fruit Variety 100% Fruit Juice	Hot Dog¹⁹ Green Beans Glazed Carrots Fresh Fruit Variety Frozen Fruit Sidekick	Deli Sub²⁰ Sun Chips Celery Sticks (1/2 cup) w/ Ranch Dragon Punch Fresh Fruit Variety Raisins



Student meals are served at no cost.
 Staff Lunch: \$4.00
 Visitor Lunch: \$5.00

Students may select from the five components to build a lunch. The components are fruit, grain, meat, vegetables and milk. A minimum of three different components must be taken to receive meal benefits. A one cup serving of fruit or vegetable or a combination of both must be taken to get lunch at no cost. Meals without a fruit or vegetable will be charged at a la carte pricing. A choice of white and flavored 1% milk is offered daily. Due to supply chain issues, menu items are subject to change.

This institution is an equal opportunity provider.