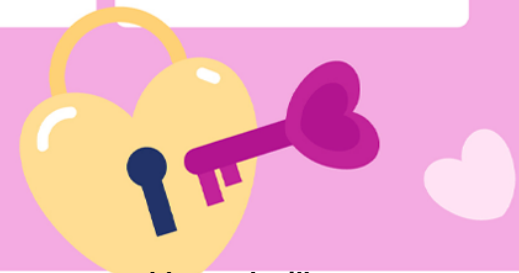


## Haywood County Schools Grades Pre-K

| Monday  | Tuesday   | Wednesday   | Thursday   | Friday  |
|---|---|---|--|---|
| <b>Chicken Tenders (2) 3</b><br>Broccoli<br>Chilled Pineapple<br>Cold Milk Variety              | <b>Chicken Quesadilla Wedge 4</b><br>Buttery Corn<br>Chilled Applesauce<br>Cold Milk Variety    | <b>Country Steak &amp; Gravy 5</b><br>w/ Roll<br>Mashed Potatoes<br>Chilled Peaches<br>Cold Milk Variety  | <b>Chicken Sandwich 6</b><br>Seasoned Fries<br>Fresh Fruit Variety<br>Cold Milk Variety        | <b>Cheese Pizza 7</b><br>Carroteenies w/ Ranch<br>Fresh Fruit Variety<br>Cold Milk Variety      |
| <b>Chicken &amp; Waffle (1) 10</b><br>Green Beans<br>Chilled Fruit Variety<br>Cold Milk Variety | <b>Spaghetti 11</b><br>WG Roll<br>Black-eyed Peas<br>Chilled Fruit Variety<br>Cold Milk Variety | <b>Pork Rib Patty On Bun 12</b><br>Seasoned Fries<br>Fresh Fruit Variety<br>Cold Milk Variety             | <b>Grilled Cheese 13</b><br>Celery Sticks w/ Ranch<br>Fresh Fruit Variety<br>Cold Milk Variety | <b>Sausage Pizza 14</b><br>Broccoli w/ Ranch<br>Fresh Fruit Variety<br>Cold Milk Variety        |
|                | <b>Chili 18</b><br>Crackers<br>Cheesy Broccoli<br>Chilled Fruit Variety<br>Cold Milk Variety    | <b>Corn Dog 19</b><br>Baked Beans<br>Chilled Fruit Variety<br>Cold Milk Variety                           | <b>Cheeseburger 20</b><br>Seasoned Fries<br>Fresh Fruit Variety<br>Cold Milk Variety           | <b>Pepperoni Pizza 21</b><br>Celery Sticks w/ Ranch<br>Fresh Fruit Variety<br>Cold Milk Variety |
| <b>Chicken Tenders (2) 24</b><br>Broccoli<br>Chilled Pineapple<br>Cold Milk Variety             | <b>Chicken Quesadilla Wedge 25</b><br>Buttery Corn<br>Chilled Applesauce<br>Cold Milk Variety   | <b>Country Steak &amp; Gravy 26</b><br>w/ Roll<br>Mashed Potatoes<br>Chilled Peaches<br>Cold Milk Variety | <b>Chicken Sandwich 27</b><br>Seasoned Fries<br>Fresh Fruit Variety<br>Cold Milk Variety       | <b>Cheese Pizza 28</b><br>Carroteenies w/ Ranch<br>Fresh Fruit Variety<br>Cold Milk Variety     |

Student meals are served at no cost.  
 Staff Lunch: \$4.00  
 Visitor Lunch: \$5.00



Pre- school students will receive all five components for lunch. The components are fruit, grain, meat, vegetables and milk.

Due to supply chain issues, menu items are subject to change.

**This institution is an equal opportunity provider.**